

# MegaNETIMPRESS

On-Board Programmer of NETIMPRESS series for a large capacity flash memory

MegaNETIMPRESS provides high-speed programming environments for a large capacity flash memory.

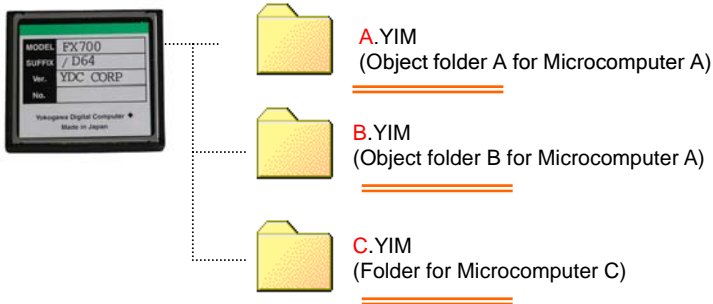


## Product Lineup

Product Code	Model	Application	
		Evaluation	Production
AF420	Full-Key Model	Best	Suitable
AF320	One-Touch Key Model	Suitable	Best

## Compact Module

Employing Compact Flash card as its media, Compact Module can store large data including the Definition Program, programming conditions and an object in a folder called the Impress Module folder (YIM). By storing multiple programming conditions, Compact Module provides superb versatility and enhanced usability in data management.



Product Code	Capacity	Description
/P64	64MB	Equivalent to existing Impress Module
/D64	64MB	Impress Module folder

## Features

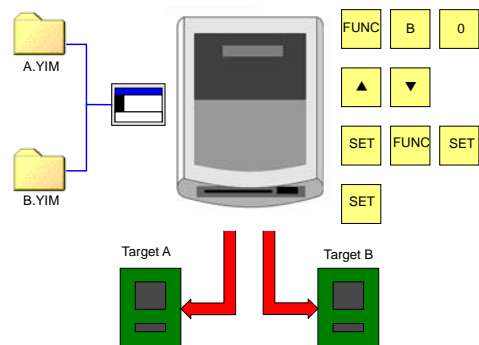
Further enhanced high-speed and ease of use

- High-speed serial transfer of 5Mbps
- 100Base-TX interface for high-speed file transfer
- 4-lines display on LCD (high operability for a stand-alone)
- Impress Module Folder
- Enhanced one-touch key operation functions
- external startup & OK/NG output function

## Stand-Alone

Stand-alone operation mode gives you the freedom of portable programming.

- 4-lines display on LCD (high operability for a stand-alone)
- Simple keypad operation on the Panel enables you select the Impress Module folder in just a snap.
- Edit program data in buffer RAM, search for edit data and generate differential files
- One-touch key operation
- AF320 of one-touch key operation model is most recommendable for manual programming at a production line, field service, etc. (Start programming by external signal input)



## License System

With Compact Module, Definition Programs can be added with additional licenses. You can add up Definition Programs to one Compact Module as required to program other type of MPU. It is very handy for codevelopment with a remote site or startup of a new overseas production line.

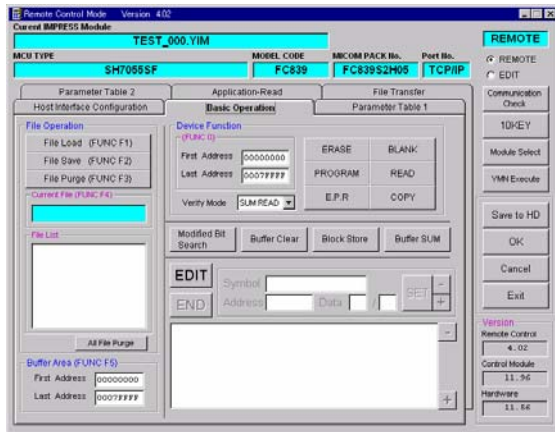
MegaNETIMPRESS is a universal tool designed to support every field from development, production, support through maintenance.

## Remote Control Application

MegaNETIMPRESS comes with the remote control software of two types.

- AZ490: Remote Controller (AZ290-Compatible) as development and test application

AZ490 gives you capabilities to control MegaNETIMPRESS remotely, change parameter settings and load a parameter file.



- With AZ490, you can generate an Impress Module folder or download the various files including the Definition Program.
- For a stand-alone operation, AZ490 can be used as a tool to save programming conditions in an Impress Module folder in the Compact Module.

- AZ491: Remote Package (AZ291-compatible) as production line application

AZ491, equipped with COM interface to receive commands from other application software on a PC, can be used as a software package to build a custom-made man-machine interface or an automatic programming system.

- Use of Compact Module reduces a time to change a product model, and a setup time. (The enhanced feature of AZ491 is available using the command to switch the Impress Module folder)
- Sequential execution of programming conditions stored in the Impress Module folder

## Target Interface

Various communication interface options are available to meet your environments.

JTAG interface support by using Serial Interface Adaptor

JTAG Interface Adaptor



For a board with no connector for serial programming, Serial Interface Adaptor of clip type is available to connect to signal pins on a board.

Serial Interface Adaptor (Clip type)



## Host Interface

100Base-TX for host interface supports a high-speed data transfer. Also, External I/O connector enables input external signals to start programming or output programming result (OK/NG).



### MegaNETIMPRESS (AF420, 320) Specifications

1. Communications with a target system
  - UART: 2400, 4800, 9600, 19200, 31250, 38400, 57600, 62500, 76800bps
  - CSI: 62.5K, 125K, 250K, 500K, 850K, 1.25Mbps, 3.3Mbps, 5Mbps (No clock transmission and parity at the side of MegaNETIMPRESS)
2. Requirements for a target system
  - Power supply voltage: 3V±10% to 5V±5%
  - Power supply for programming (VPP): 12V, 200mA (Max.)
  - Cable to connect with a target system: AZ410 to AZ413

### About Customer Support

1. Support via Internet  
The support including the following is available at our Web site <http://www.yokogawa-digital.com/en/NETIMPRESS.html>:
  - Micom Pack
  - Various software tools
  - Product information
2. Fully customized support  
Solutions including development environments and production systems proposals that meet a user's exact requirements are provided. Also, services to develop an ISO-based CAN programmer, automatic programming system, etc. are available.

## Yokogawa Digital Computer Corporation

Instruments Business Division  
6FL., J-Tower, 1-1 Nikkocho, Fuchu-shi, Tokyo, 183-0044 Japan  
TEL: 81-42-333-6224 FAX: 81-42-352-6109  
URL: <http://www.yokogawa-digital.com/en/>  
E-mail: [info-impress@yokogawa-digital.com](mailto:info-impress@yokogawa-digital.com)